



1100 NEWPORT CENTER DRIVE | NEWPORT BEACH, CA



5,187 SF Available with Private Balcony & Ocean Views

BUILDING OVERVIEW

1100 Newport Center Drive is a Class A two-story building conveniently located on the corner of Granville/Civic Center Drive and Newport Center Drive, just one block from Pacific Coast Highway and Fashion Island Mall. This property has covered (reserved) parking in addition to a surface parking lot for convenient ingress and egress.

FEATURES

Functional layout with combination of private offices and open work area. Existing cubicles (not depicted in floor plan) can accommodate up to 12 employees. Beautiful entrance and conference room overlooking coastline

Private Restrooms
Large private balcony

AVAILABILITY

5,187 SF

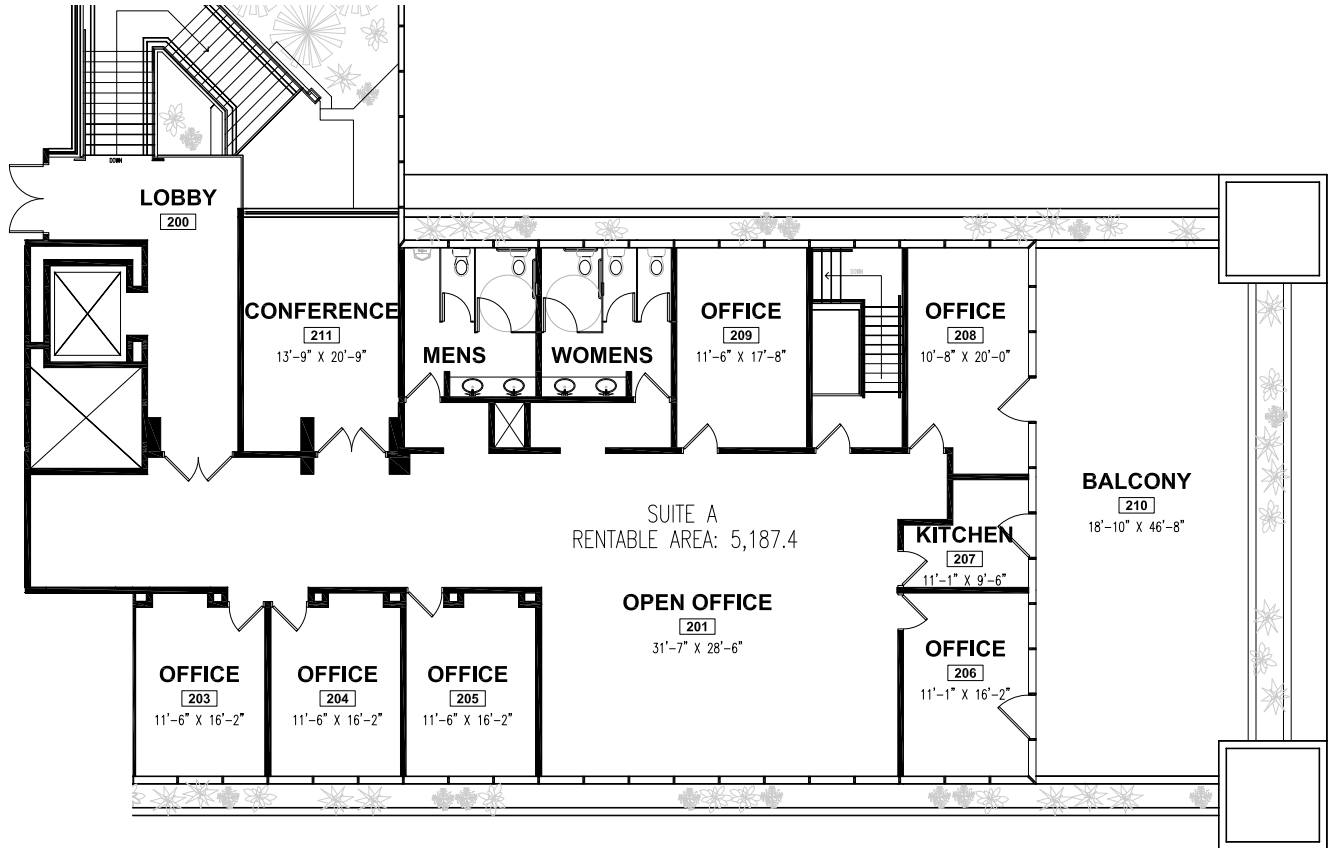


BURNHAM
USA

For leasing information contact:
Andrea Trinen | DRE #01769675
949.760.9150
atrinen@burnhamusa.com
burnhamusa.com



1100 NEWPORT CENTER DRIVE | NEWPORT BEACH, CA



ACCESS

Strong presence on the signalized intersection of Newport Center Drive and Granville/Civic Center Drive
Convenient access to 55 Freeway, 73 Toll Road and Pacific Coast Highway.

Walking distance to world class retailers and restaurants

DEMOGRAPHICS (3 MILES)

Population: 82,061

Average HH Income: \$152,899



For leasing information contact:
Andrea Trinen | DRE #01769675
949.760.9150
atrinen@burnhamusa.com
burnhamusa.com